



silentFX®

Acoustical
Systems Guide

RESIDENTIAL | COMMERCIAL | HOSPITALITY | EDUCATION | HEALTHCARE

Hear Is What Matters

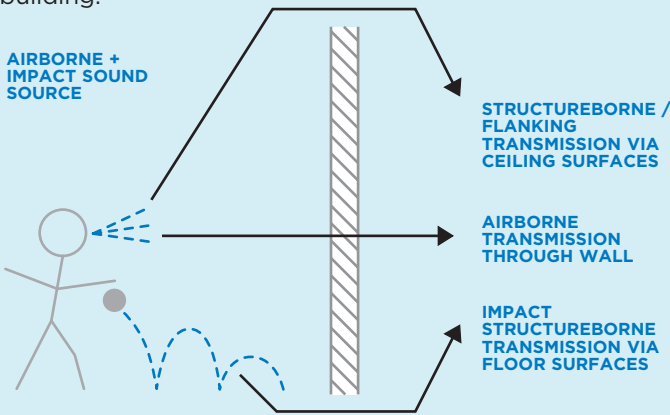
Acoustics is the scientific study of sound. The majority of architectural acoustic situations consist of a source, a path and a receiver. The source can be the neighbour’s home theater system, a patient waiting room or the high school band practice room. The receiver can be a person trying to talk on the phone, sitting in an examination room or conducting a class. The sound transmission paths are those building elements through which noise from the source travels to interfere with our daily activities. SilentFX® QuickCut™ Gypsum Board systems address these paths and through proper design and installation contribute to satisfactory sound isolation and privacy.

DECIBEL (dB)

A measurement of sound intensity or loudness. The more intense the sound, the higher the dB level.

AIRBORNE VS. STRUCTUREBORNE SOUND

Airborne: Sound transmitted through air.
Structureborne: Sound transmitted through structure of building.

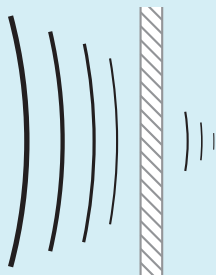


Some key performance characteristics of good acoustic design are to provide mass to the system with the ability to dampen vibrations caused by sound energy striking the system. SilentFX® QuickCut™ Gypsum Board is engineered using the mass of two dense gypsum board layers with an inner layer of viscoelastic polymer that acts much like a shock absorber to dampen board vibrations. This type of “Constrained Layer Damping” board product performs well acoustically over an extended range of frequencies, resulting in increased Sound Transmission Class (STC) ratings for the systems.

| SOURCE ROOM | RECEIVING ROOM | MIN. STC* |
|---------------------------|---------------------------------|-----------|
| SCHOOL | | |
| Classroom | Adjacent Classroom | |
| | Speech use only | STC 42 |
| | Speech + Audiovisual | STC 48 |
| | Corridor, public area | STC 42 |
| | Recreational area | STC 52+ |
| DOCTOR'S SUITE | | |
| Office | Adjacent offices | STC 52 |
| | Corridor, lobby | STC 52 |
| | Mechanical | STC 52+ |
| HOTEL | | |
| Bedroom | Adjacent bedroom | STC 48+ |
| | Corridor, lobby, public area | STC 48+ |
| | Mechanical | STC 52+ |
| MULTI-FAMILY HOME | | |
| Bedroom | Adjacent Bedroom | STC 48-55 |
| | Living room, separate occupancy | STC 50-57 |
| | Corridor, lobby, public area | STC 48-55 |
| | Exterior of building | STC 42-60 |
| * Recommended minimum STC | | |

Noise leaks, as the term implies, are the result of situations such as unsealed gaps at wall/wall, wall/floor and wall/ceiling junctures, medicine cabinets installed back to back and electrical outlets on each side of a wall sharing the same stud cavity. Flanking paths are those indirect routes that noise can follow to an adjacent room or dwelling, such as openings under doors, air ducts and floors under a common wall. Reducing or eliminating through-wall penetrations and restricting wall penetrations to one per stud cavity assists in achieving the acoustical performance of the wall system. Such noise problems can be greatly reduced by thoughtful planning in the early stages of the building's design and close supervision with proper attention to small details during construction.

SOUND TRANSMISSION CLASS (STC) RATING
A single number rating system that represents the sound transmission loss performance of a wall.



AMBIENT NOISE
All sound in a given environment, including sound from outdoors, building services and utilities.

| | PERCEPTION OF SOUND PRESSURE | SOUND PRESSURE LEVEL (dB) |
|--------------------------|------------------------------|---------------------------|
| PAIN THRESHOLD----- | | 140----- |
| JET TAKE-OFF----- | INTOLERABLE | 130----- |
| | | 120----- |
| ROCK CONCERT----- | | 110----- |
| | DEAFENING | 100----- |
| | | 90----- |
| STREET TRAFFIC----- | | 80----- |
| | VERY LOUD | 70----- |
| PHONE RINGING----- | | 60----- |
| TV / BUSY OFFICE----- | | 50----- |
| | MODERATE | 40----- |
| NORMAL CONVERSATION----- | | 30----- |
| | | 20----- |
| QUIET ROOM----- | FAINT | 10----- |
| | | 0----- |
| CALM BREATHING----- | | |
| HEARING THRESHOLD----- | VERY FAINT | |

SilentFX® QuickCut™ Noise-Reducing Gypsum Board

For the best in acoustic management.

CertainTeed's SilentFX® QuickCut™ is a noise-reducing gypsum board specifically designed for systems requiring high STC ratings.

SilentFX® QuickCut™ Noise-Reducing Gypsum Board is specifically designed to reduce airborne sound transmission between two adjoining spaces when used in wall or floor/ceiling assemblies. SilentFX® QuickCut™ features a viscoelastic polymer that installs and finishes like standard drywall, and dampens sound energy. Application of the viscoelastic polymer between two specially formulated dense gypsum cores results in a combination that significantly improves sound attenuation and is ideal for systems requiring high STC performance. Commercial acoustic systems featuring SilentFX® QuickCut™ provide STC ratings of 50 and up. In addition to providing exceptional acoustic performance, this functionally superior board is engineered to score and snap for faster installation and lower labour costs.

SilentFX® QuickCut™ finishes like standard gypsum board

ENHANCED ACOUSTICAL PERFORMANCE

STC ratings of 50 and greater

ENHANCED FIRE RESISTANCE

Available in 16 mm (5/8") Type X,
UL/cUL Classified and ULC Listed

MOULD RESISTANCE

Best possible score
per ASTM D3273

ABUSE RESISTANCE

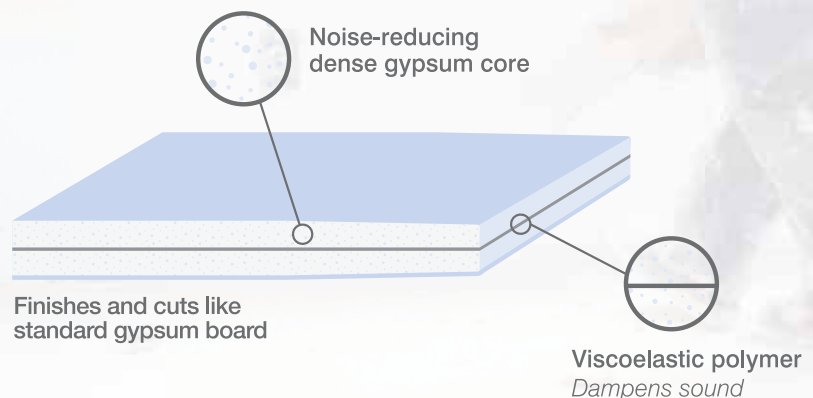
Surface abrasion: 2
Soft body: 1

LOW-EMITTING MATERIAL

GREENGUARD Gold Certified

HIGH-DENSITY CORE

Provides increased mass



PRODUCT CERTIFIED
FOR LOW CHEMICAL
EMISSIONS:
ULCOM/GG
UL 2818



Certified

The Health Product
Declaration® logo is a
registered trademark
of HPD Collaborative.

M2TECH

Mould and
moisture
technology

SilentFX® QuickCut™ is an excellent acoustic solution for meeting Sound Transmission Class (STC) specifications without complex techniques such as isolation clips or resilient channels. It can also help reduce material usage versus traditional gypsum systems that require high sound attenuation.

MORE RELIABLE THAN CLIPS AND CHANNELS

Clips and resilient channel can easily be short-circuited during the construction process and even afterwards, during picture hanging or pressing of heavy objects against the wall, negatively affecting acoustic performance. These risks are eliminated when using SilentFX® QuickCut™, thus providing more consistent acoustic performance. When used in systems with resilient channel, SilentFX® QuickCut™, can reduce the negative effect of short circuits.

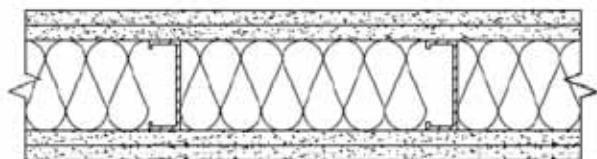
SPACE SAVINGS

The high acoustic performance of SilentFX® QuickCut™ makes it possible to build effective noise-reducing walls with less material, gaining valuable space and saving both construction time and material cost. Less material used also means a more sustainable structure in keeping with today's green building practices.

Requires "half" the labour

SilentFX® QuickCut™ single layering versus double layering performance. Single layering is faster to install with less labour, higher STC performance and less chance of a bad install.

DOUBLE LAYER 16 mm (5/8") TYPE X

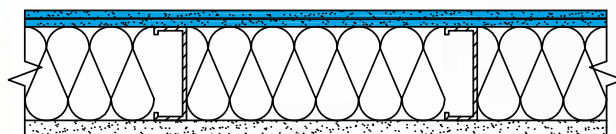


DOUBLE LAYER 16 mm (5/8") TYPE X

Thickness: 156 mm (6-1/8")
Sound test: STC 55

VS

SINGLE LAYER SILENTFX® QUICKCUT™ 16 mm (5/8") TYPE X



SINGLE LAYER CERTAINTED 16 mm (5/8") TYPE X

Thickness: 124 mm (4-7/8")
Sound test: STC 56

2015 National Building Code of Canada

APPARENT SOUND TRANSMISSION CLASS (ASTC)

In previous editions of the National Building Code of Canada (NBC), sound insulation requirements between dwelling units were presented in terms of Sound Transmission Class (STC).

In the NBC 2015, sound insulation requirements are now also presented in terms of Apparent Sound Transmission Class (ASTC). ASTC includes the contributions from flanking transmission of sound and therefore is a better descriptor of the acoustic performance of the building. The ASTC rating between dwelling units must be 47 or greater for compliance with the NBC 2015.

CertainTeed Gypsum contracted with the National Research Council Canada (NRC) to conduct extensive testing and calculation programs for SilentFX® QuickCut™ Gypsum Board on wood and steel stud wall assemblies with example assemblies provided on the following page. For complete details of the ASTC programs, please refer to NRC-CNRC Reports A1-007750.3 (Wood Stud Walls) and A1-010179.1 (Steel Stud Walls) on the NRC-CNRC website or contact CertainTeed Marketing Technical Services at 1-800-446-5284.

Acoustic System

Combining SilentFX® QuickCut™ with SilentFX® Noiseproofing Sealant and SilentFX® Noiseproofing Putty — creates an excellent acoustic system for meeting sound transmission class (STC) specifications without complex techniques. There is no need for isolation clips or resilient channels. This system also helps reduce material usage versus traditional gypsum systems that require numerous layers of drywall.



SILENTFX® NOISEPROOFING SEALANT

Acoustic caulk used to fill gaps between walls and floors and around electrical outlets, light fixtures, windows, and doors.

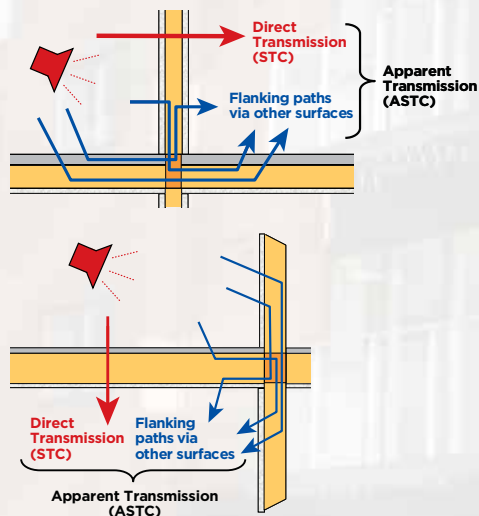


SILENTFX® NOISEPROOFING PUTTY

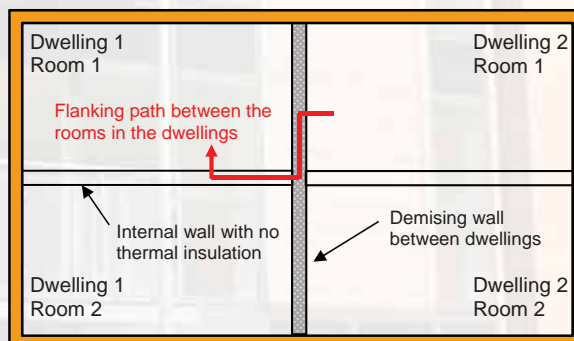
Heavy mastic acoustic putty formulated to completely seal electrical outlet boxes, ducts, cables, etc. that could jeopardize acoustic-rated wall assemblies.



WOOD STUD FLANKING PATHS



STEEL STUD FLANKING PATHS



EXAMPLES OF WOOD AND STEEL STUD ASSEMBLIES

- A** 38 x 89 mm [2" x 4"] wood studs 406 mm [16"] o.c.
staggered 200 mm [8"] o.c. on 150 mm [6"] plates.

ONE SIDE

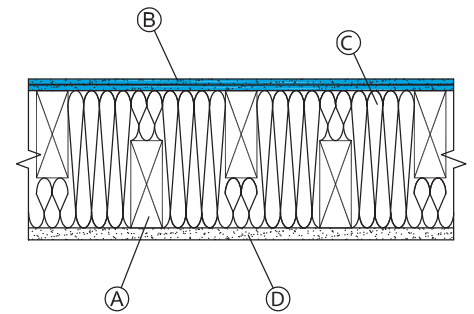
- B** 16 mm [5/8"] SilentFX® QuickCut™ Type X applied with
32 mm [1-1/4"] type W screws 300 mm [12"] o.c.
C 90 mm [3-1/2"] CertainTeed NoiseReducer™ Sustainable
Insulation or equivalent

OPPOSITE SIDE

- D** 16 mm [5/8"] CertainTeed Type X applied with 32 mm
[1-1/4"] type W screws 300 mm [12"] o.c.
All joints staggered

ASTC RATING
50

FIRE RATING
1 hr.
UL/cUL U340
ULC W313



- A** 38 x 89 mm [2" x 4"] wood studs 406 mm [16"] o.c.
staggered 200 mm [8"] o.c. on 150 mm [6"] plates.

ONE SIDE

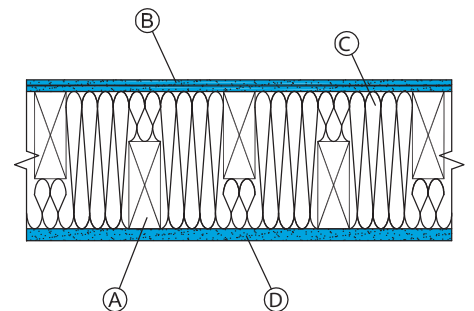
- B** 16 mm [5/8"] SilentFX® QuickCut™ Type X applied with
32 mm [1-1/4"] type W screws 300 mm [12"] o.c.
C 90 mm [3-1/2"] CertainTeed NoiseReducer™ Sustainable
Insulation or equivalent

OPPOSITE SIDE

- D** 16 mm [5/8"] SilentFX® QuickCut™ Type X applied with
32 mm [1-1/4"] type W screws 300 mm [12"] o.c.
All joints staggered

ASTC RATING
54

FIRE RATING
1 hr.
UL/cUL U340
ULC W313



- A** 92 mm [3-5/8"] light gauge .46 mm [.018"] steel studs
406 mm [16"] o.c.

ONE SIDE

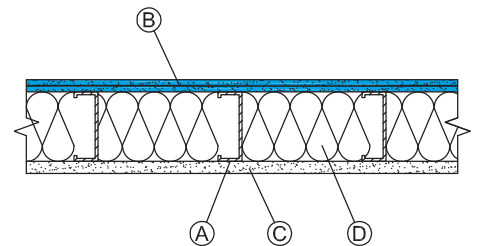
- B** 16 mm [5/8"] SilentFX® QuickCut™ Type X applied
with 25 mm [1"] type S screws 300 mm [12"] o.c.

OPPOSITE SIDE

- C** 16 mm [5/8"] CertainTeed Type X applied with 25 mm
[1"] type S screws 300 mm [12"] o.c.
All joints staggered.
D 90 mm [3-1/2"] CertainTeed NoiseReducer™
Sustainable Insulation or equivalent.

ASTC RATING
47

FIRE RATING
1 hr.
UL/cUL U465,
V450, V486



- A** 92 mm [3-5/8"] light gauge .46 mm [.018"] steel studs
406 mm [16"] o.c.

ONE SIDE

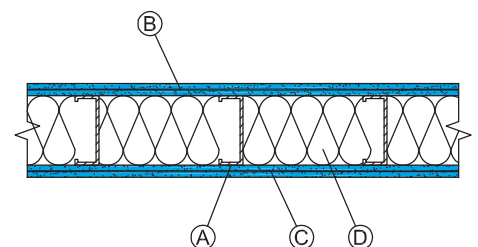
- B** 16 mm [5/8"] SilentFX® QuickCut™ Type X applied
with 25 mm [1"] type S screws 300 mm [12"] o.c.

OPPOSITE SIDE

- C** 16 mm [5/8"] SilentFX® QuickCut™ Type X applied
with 25 mm [1"] type S screws 300 mm [12"] o.c.
All joints staggered.
D 90 mm [3-1/2"] CertainTeed NoiseReducer™
Sustainable Insulation or equivalent.

ASTC RATING
48

FIRE RATING
1 hr.
UL/cUL U465,
V450, V486





silentFX Noiseproofing
Sealant

Rx Symphony® m
Mineral Fiber Ceilings

silentFX
QuickCut™

Sustainable Insulation™

A quiet place to heal.

Healthcare facilities need to provide an oasis of quiet — conducive to healing. They are also under pressure to reduce costs and be more responsive to patients. In hospitals with reduced noise levels, patient satisfaction with caregiving is increased and sleep is improved. This leads to faster healing, which can mean shorter stays and reduced costs for both patients and hospitals.

BENEFITS FOR HEALTHCARE FACILITIES

Improves patients' sleep and healing time, leading to reduced costs

Increases staff job satisfaction, which can reduce turnover

Helps meet HIPAA acoustic privacy regulations

Ref: *Sleep Disruption due to Hospital Noises: A Prospective Evaluation, 2012*

<https://www.ncbi.nlm.nih.gov/pubmed/22868834>

Symphony® f
Fiberglass Ceilings

silentFX® Noiseproofing
Sealant

Sustainable
Insulation™

silentFX®
QuickCut™

More learning with less distraction.

Learning depends on communication between teachers and students. Excessive noise creates a barrier to learning. Noise such as conversations in hallways, sound systems, students in other classrooms and mechanical equipment can hamper student concentration. Background noise causes teachers to raise their voices, which results in vocal strain over time. SilentFX® QuickCut™ specifically reduces sound transmission from adjacent spaces to make it easier for teachers to be heard and students to learn.



BENEFITS FOR SCHOOLS

Reduces distractions so students can pay closer attention and learn more effectively

Keeps the lines of communication between students and teachers clear and open

Reduces teacher voice strain and increases effectiveness



silentFX® Noiseproofing Sealant

silentFX® QuickCut™

NoiseReducer®
Insulation

Get away from it all.

A hotel's most important promise to its guests is privacy and relaxation. Guests who feel relaxed and refreshed are more likely to return and recommend the hotel to others. Yet by nature, hotels are busy, noisy places. People come and go around the clock, vacuums are disruptive, foot traffic and conversations can be heard up and down hallways. SilentFX® QuickCut™ enhances the guest experience by providing a sound-buffered oasis of comfort amid the hustle and bustle of the busiest hotel.

BENEFITS FOR HOTELS

Helps guests feel relaxed and comfortable so they want to return

Isolates noise from other guest rooms, service corridors and mechanical equipment

Reduces disruptions and distractions in conference rooms and other meeting spaces



Sustainable Insulation™

silentFX®
QuickCut™

silentFX®
Noiseproofing
Putty

Never hear the neighbours.

In a home, good acoustics are even more important to ensure quality of life. SilentFX® QuickCut™ reduces noise between residential units to increase the sense of separation from neighbours that is necessary for comfort and privacy. SilentFX® QuickCut™ gypsum board systems, with an STC rating of 50 or higher, substantially decrease sound transmitted through walls and improve residents' satisfaction, which leads to less turnover and fewer expenses associated with filling vacancies.

BENEFITS FOR MULTI-FAMILY HOMES

Minimizes neighbourhood noise

Increases community harmony

Improves resident satisfaction and peace of mind



Installation and Finishing

INSTALLATION

SilentFX® QuickCut™ Gypsum Board is installed following traditional methods of application and finishing of interior gypsum board products for both walls and ceilings. 13 mm (1/2") SilentFX® QuickCut™ is for use on interior walls in residential, commercial and institutional applications. 16 mm (5/8") SilentFX® QuickCut™ Type X is for use on interior walls and ceilings in residential, commercial and institutional applications.

- Plan SilentFX® QuickCut™ board layout to stagger joints from one side of the wall to the other and stagger between board layers for multi-layered assemblies
- Install batt insulation (CertainTeed's thermal and acoustical fibreglass insulation or equivalent) in cavities
- Use SilentFX® Noiseproofing Putty Pads (or equivalent) or acoustical sealant to seal electrical outlet boxes
- Install SilentFX® QuickCut™ in accordance with GA-216, "Application and Finishing of Gypsum Panels" (ASTM C840, CAN/CSA-A82.31)
- Allow a 6 mm (1/4") gap around all wall perimeter edges
- SilentFX® QuickCut™ boards are cut by scoring from the face side and snapping the same as standard gypsum board
- Seal the 6 mm (1/4") perimeter gaps and wall penetrations per ASTM C919 with SilentFX® Noiseproofing Sealant or equivalent acoustical sealant

FINISHING

SilentFX® QuickCut™ Gypsum Board may be finished, painted or wallpapered using conventional gypsum board finishing techniques. The Gypsum Association GA-214, "Recommended Levels of Gypsum Board Finish" should be referenced when specifying the level of finishing desired.

FIRE-RATED ASSEMBLIES

For the installation of fire-rated assemblies, refer to the appropriate UL/cUL or ULC design in the UL/ULC Fire Resistance Directories for details such as board orientation and fastening schedules.

The UL/ULC Type Designation for 16 mm (5/8") SilentFX® QuickCut™ Type X is **Type SilentFX.**

Building Responsibly

CertainTeed respects the environment through the responsible development of sustainable building products and systems.

The building industry continues to look for ways to reduce impact on the environment while meeting customer demand for products that deliver beauty, comfort and performance.

CertainTeed's commitment to these goals is reflected here, highlighting our ongoing effort to become the preeminent supplier of green building materials.

Awareness of the importance of acoustics in sustainable construction continues to grow, and this is evident with the inclusion of sustainability requirements in many building programs and codes:

- LEED v4
 - EQ Prerequisite 3: Schools Minimum Acoustic Performance
 - EQ Credit 9: Acoustic Performance
- Green Guide for Health Care
 - EQ Credit 9.1: Acoustic Environment
- 2015 International Green Construction Code (IgCC)
 - Section 3.3: Acoustical Control
- National Building Code of Canada (NBCC)
 - Sections 5.9 and 9.11

Review systems performance information to see how SilentFX® QuickCut™ systems can help contribute to these sustainable programs:



The Health Product Declaration® logo is a registered trademark of HPD Collaborative.

13 mm [1/2"] SILENTFX® QUICKCUT™ - WOOD STUD SYSTEMS

A 38 x 89 mm [2" x 4"] wood studs 406 mm [16"] o.c.

ONE SIDE

B 13 mm [1/2"] SilentFX® QuickCut™ applied with 32 mm [1-1/4"] type W screws 406 mm [16"] o.c.

OPPOSITE SIDE

C 13 mm [1/2"] CertainTeed Easi-Lite® applied with 32 mm [1-1/4"] type W screws 406 mm [16"] o.c.
All joints staggered.

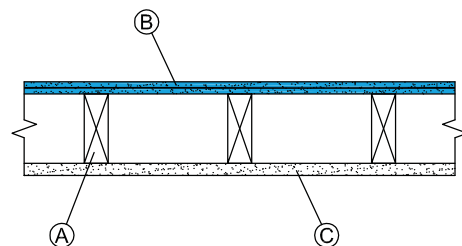
STC RATING

36

OL 17-0327

FIRE RATING

N/A



A 38 x 89 mm [2" x 4"] wood studs 406 mm [16"] o.c.

ONE SIDE

B 13 mm [1/2"] SilentFX® QuickCut™ applied with 32 mm [1-1/4"] type W screws 406 mm [16"] o.c.

OPPOSITE SIDE

C 13 mm [1/2"] CertainTeed Easi-Lite® applied with 32 mm [1-1/4"] type W screws 406 mm [16"] o.c.
All joints staggered.

D 90 mm [3-1/2"] CertainTeed Thermal & Acoustical Fibreglass Insulation or equivalent.

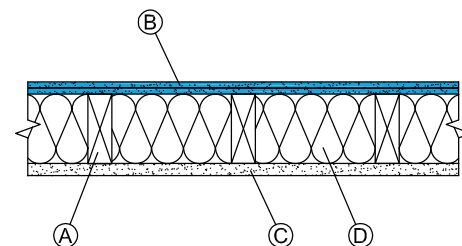
STC RATING

41

OL 17-0328

FIRE RATING

N/A



A 38 x 89 mm [2" x 4"] wood studs 610 mm [24"] o.c.

ONE SIDE

B Face layer 13 mm [1/2"] CertainTeed Easi-Lite® applied with 41 mm [1-5/8"] type W screws 406 mm [16"] o.c.

C Base layer 13 mm [1/2"] SilentFX® QuickCut™ applied with 32 mm [1-1/4"] type W screws 406 mm [16"] o.c.

OPPOSITE SIDE

D 13 mm [1/2"] CertainTeed Easi-Lite® applied with 32 mm [1-1/4"] type W screws 406 mm [16"] o.c.
All joints staggered. No insulation in the cavity.

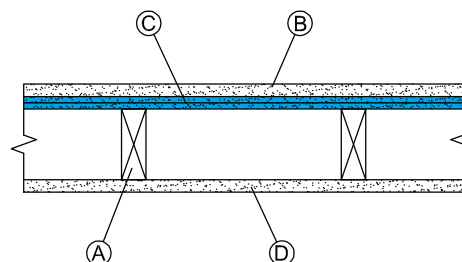
STC RATING

42

OL 17-0210

FIRE RATING

N/A



A 38 x 89 mm [2" x 4"] wood studs 610 mm [24"] o.c.

ONE SIDE

B 13 mm [1/2"] SilentFX® QuickCut™ applied with 32 mm [1-1/4"] type W screws 406 mm [16"] o.c.

OPPOSITE SIDE

C 13 mm [1/2"] CertainTeed Easi-Lite® applied with 32 mm [1-1/4"] type W screws 406 mm [16"] o.c.
All joints staggered.

D 90 mm [3-1/2"] CertainTeed Thermal & Acoustical Fibreglass Insulation or equivalent.

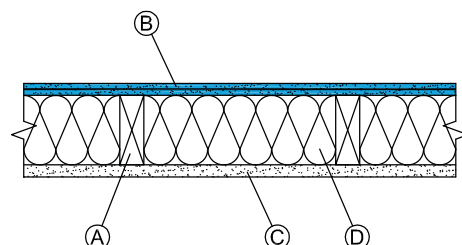
STC RATING

50

OL 17-0208

FIRE RATING

N/A



NOTES

SilentFX® QuickCut™ can be used as either the base or face layer in a multi-layer system without affecting the STC rating. Equivalent fibreglass insulations may be substituted for CertainTeed Insulation products.

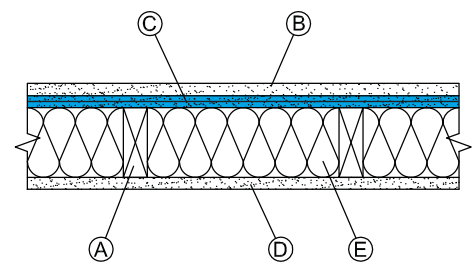
- A** 38 x 89 mm [2" x 4"] wood studs 610 mm [24"] o.c.
ONE SIDE
B Face layer 16 mm [5/8"] CertainTeed Type X applied with 41 mm [1-5/8"] type W screws 300 mm [12"] o.c.
C Base layer 13 mm [1/2"] SilentFX® QuickCut™ applied with 32 mm [1-1/4"] type W screws 406 mm [16"] o.c.
OPPOSITE SIDE
D 16 mm [5/8"] CertainTeed Type X applied with 32 mm [1-1/4"] type W screws 300 mm [12"] o.c.
 All joints staggered.
E 90 mm [3-1/2"] CertainTeed Thermal & Acoustical Fibreglass Insulation or equivalent.

STC RATING

52
 OL 17-0212

FIRE RATING

1 hr.
 UL/cUL U309
 ULC W313
 GA WP 3510



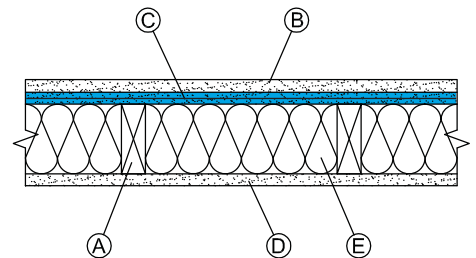
- A** 38 x 89 mm [2" x 4"] wood studs 610 mm [24"] o.c.
ONE SIDE
B Face layer 13 mm [1/2"] CertainTeed Easi-Lite® applied with 41 mm [1-5/8"] type W screws 406 mm [16"] o.c.
C Base layer 13 mm [1/2"] SilentFX® QuickCut™ applied with 32 mm [1-1/4"] type W screws 406 mm [16"] o.c.
OPPOSITE SIDE
D 13 mm [1/2"] CertainTeed Easi-Lite® applied with 32 mm [1-1/4"] type W screws 406 mm [16"] o.c.
 All joints staggered.
E 90 mm [3-1/2"] CertainTeed Thermal & Acoustical Fibreglass Insulation or equivalent.

STC RATING

51
 OL 17-0209

FIRE RATING

N/A



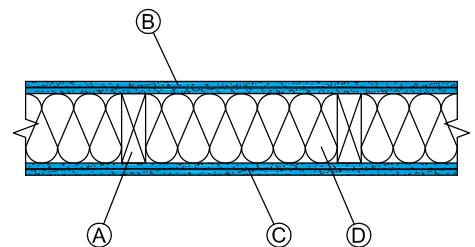
- A** 38 x 89 mm [2" x 4"] wood studs 610 mm [24"] o.c.
ONE SIDE
B 13 mm [1/2"] SilentFX® QuickCut™ applied with 32 mm [1-1/4"] type W screws 406 mm [16"] o.c.
OPPOSITE SIDE
C 13 mm [1/2"] SilentFX® QuickCut™ applied with 32 mm [1-1/4"] type W screws 406 mm [16"] o.c.
 All joints staggered.
D 90 mm [3-1/2"] CertainTeed Thermal & Acoustical Fibreglass Insulation or equivalent.

STC RATING

54
 OL 17-0211

FIRE RATING

N/A



NOTES

SilentFX® QuickCut™ can be used as either the base or face layer in a multi-layer system without affecting the STC rating. Equivalent fibreglass insulations may be substituted for CertainTeed Insulation products.

16 mm [5/8"] SILENTFX® QUICKCUT™ - WOOD STUD SYSTEMS

A 38 x 89 mm [2" x 4"] wood studs 610 mm [24"] o.c.

ONE SIDE

B 16 mm [5/8"] SilentFX® QuickCut™ Type X applied with 32 mm [1-1/4"] type W screws 300 mm [12"] o.c.

OPPOSITE SIDE

C 13 mm [1/2"] CertainTeed Easi-Lite® applied with 32 mm [1-1/4"] type W screws 300 mm [12"] o.c. All joints staggered.

D 90 mm [3-1/2"] CertainTeed Thermal & Acoustical Fibreglass Insulation or equivalent.

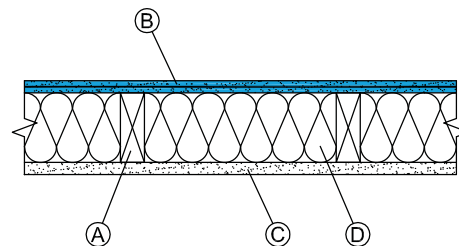
STC RATING

51

OL 17-0207

FIRE RATING

N/A



A 38 x 89 mm [2" x 4"] wood studs 610 mm [24"] o.c.

ONE SIDE

B 16 mm [5/8"] SilentFX® QuickCut™ Type X applied with 32 mm [1-1/4"] type W screws 300 mm [12"] o.c.

OPPOSITE SIDE

C 16 mm [5/8"] SilentFX® QuickCut™ Type X applied with 32 mm [1-1/4"] type W screws 300 mm [12"] o.c.

D 90 mm [3-1/2"] CertainTeed Thermal & Acoustical Fibreglass Insulation or equivalent

STC RATING

54

OL 15-1110

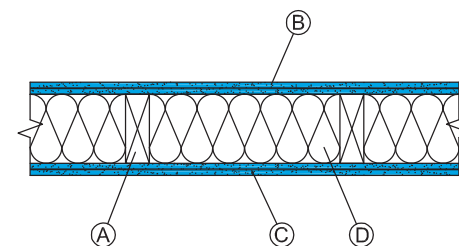
FIRE RATING

1 hr.

UL/cUL U309

ULC W313

GA WP 3510



A 38 x 89 mm [2" x 4"] wood studs 610 mm [24"] o.c.

ONE SIDE

B 16 mm [5/8"] SilentFX® QuickCut™ applied with 32 mm [1-1/4"] type W screws 300 mm [12"] o.c.

OPPOSITE SIDE

C 16 mm [5/8"] CertainTeed Type X applied with 32 mm [1-1/4"] type W screws 300 mm [12"] o.c. All joints staggered.

D 90 mm [3-1/2"] CertainTeed Thermal & Acoustical Fibreglass Insulation or equivalent.

STC RATING

51

OL 15-0503

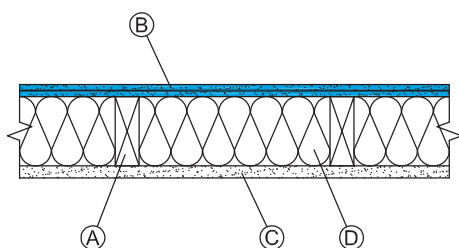
FIRE RATING

1 hr.

UL/cUL U309

ULC W313

GA WP 3246



A 38 x 89 mm [2" x 4"] wood studs 610 mm [24"] o.c.

ONE SIDE

B Resilient channel 610 mm [24"] o.c.

C 16 mm [5/8"] SilentFX® QuickCut™ Type X applied with 25 mm [1"] type S screws 300 mm [12"] o.c.

OPPOSITE SIDE

D 16 mm [5/8"] CertainTeed Type X applied with 32 mm [1-1/4"] type W screws 300 mm [12"] o.c. All joints staggered.

E 90 mm [3-1/2"] CertainTeed Thermal & Acoustical Fibreglass Insulation or equivalent.

STC RATING

56

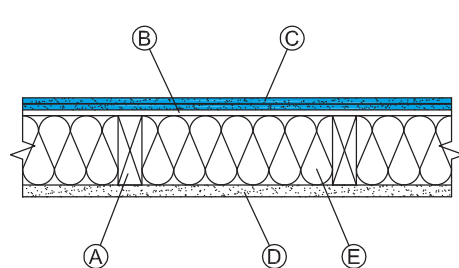
OL 17-0330

FIRE RATING

1 hr.

UL/cUL U309

GA WP 3243



NOTES

SilentFX® QuickCut™ can be used as either the base or face layer in a multi-layer system without affecting the STC rating. Equivalent fibreglass insulations may be substituted for CertainTeed Insulation products.

- A** 38 x 89 mm [2" x 4"] wood studs 610 mm [24"] o.c.
ONE SIDE
B Resilient channel 610 mm [24"] o.c.
C Base layer 16 mm [5/8"] SilentFX® QuickCut™ Type X applied with 25 mm [1"] type S screws 300 mm [12"] o.c.
D Face layer 16 mm [5/8"] CertainTeed Type X applied with 41 mm [1-5/8"] type S screws 300 mm [12"] o.c.

OPPOSITE SIDE

- E** 16 mm [5/8"] CertainTeed Type X applied with 32 mm [1-1/4"] type W screws 300 mm [12"] o.c.
 All joints staggered.
F 90 mm [3-1/2"] CertainTeed Thermal & Acoustical Fibreglass Insulation or equivalent.

STC RATING

59

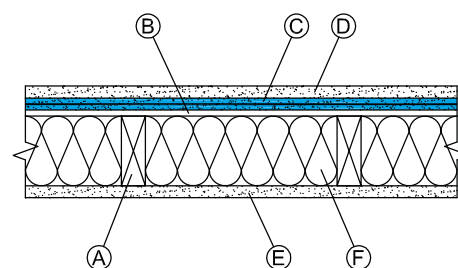
OL 17-0331

FIRE RATING

1 hr.

UL/cUL U305

GA WP 3243



- A** 38 x 89 mm [2" x 4"] wood studs 406 mm [16"] o.c.
ONE SIDE
B Resilient channel 610 mm [24"] o.c.
C 16 mm [5/8"] SilentFX® QuickCut™ Type X applied with 25 mm [1"] type S screws 300 mm [12"] o.c.

OPPOSITE SIDE

- D** 16 mm [5/8"] CertainTeed Type X applied with 32 mm [1-1/4"] type W screws 300 mm [12"] o.c.
 All joints staggered.
E 90 mm [3-1/2"] CertainTeed Thermal & Acoustical Fibreglass Insulation or equivalent.

STC RATING

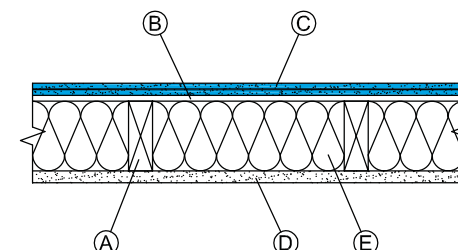
52

OL 17-0226

FIRE RATING

1 hr.

UL/cUL U305



- A** 38 x 89 mm [2" x 4"] wood studs 406 mm [16"] o.c.
ONE SIDE
B Resilient channel 610 mm [24"] o.c.
C Base layer 16 mm [5/8"] SilentFX® QuickCut™ Type X applied with 25 mm [1"] type S screws 300 mm [12"] o.c.
D Face layer 16 mm [5/8"] CertainTeed Type X applied with 41 mm [1-5/8"] type S screws 300 mm [12"] o.c.

OPPOSITE SIDE

- E** 16 mm [5/8"] CertainTeed Type X applied with 32 mm [1-1/4"] type W screws 300 mm [12"] o.c.
 All joints staggered.
F 90 mm [3-1/2"] CertainTeed Thermal & Acoustical Fibreglass Insulation or equivalent.

STC RATING

58

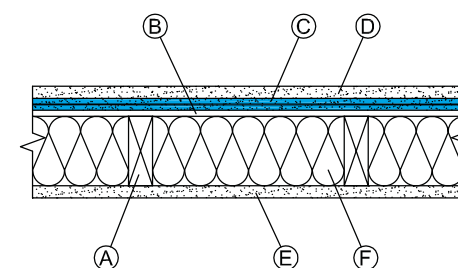
OL 17-0227

FIRE RATING

1 hr.

UL/cUL U305

GA WP 3245



- A** 38 x 89 mm [2" x 4"] wood studs 610 mm [24"] o.c.
ONE SIDE
B Resilient channel 610 mm [24"] o.c.
C 16 mm [5/8"] SilentFX® QuickCut™ Type X applied with 25 mm [1"] type S screws 300 mm [12"] o.c.

OPPOSITE SIDE

- D** 16 mm [5/8"] SilentFX® QuickCut™ Type X applied with 32 mm [1-1/4"] type W screws 300 mm [12"] o.c.
 All joints staggered.
E 90 mm [3-1/2"] CertainTeed Thermal & Acoustical Fibreglass Insulation or equivalent.

STC RATING

59

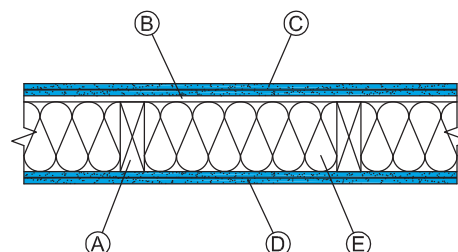
OL 17-0329

FIRE RATING

1 hr.

UL/cUL U309

GA WP 3243



NOTES

SilentFX® QuickCut™ can be used as either the base or face layer in a multi-layer system without affecting the STC rating. Equivalent fibreglass insulations may be substituted for CertainTeed Insulation products.

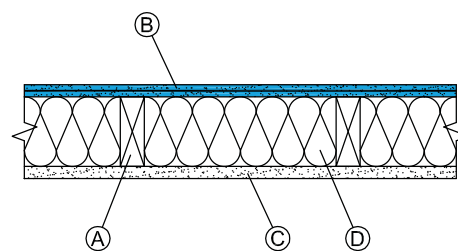
- A** 38 x 89 mm [2" x 4"] wood studs 406 mm [16"] o.c.
ONE SIDE
B 16 mm [5/8"] SilentFX® QuickCut™ Type X applied with 32 mm [1-1/4"] type W screws 300 mm [12"] o.c.
OPPOSITE SIDE
C 16 mm [5/8"] CertainTeed Type X applied with 32 mm [1-1/4"] type W screws 300 mm [12"] o.c.
 All joints staggered.
D 90 mm [3-1/2"] CertainTeed Thermal & Acoustical Fibreglass Insulation or equivalent.

STC RATING

45
 OL 17-0225

FIRE RATING

1 hr.
 UL/cUL U305
 GA WP 3605



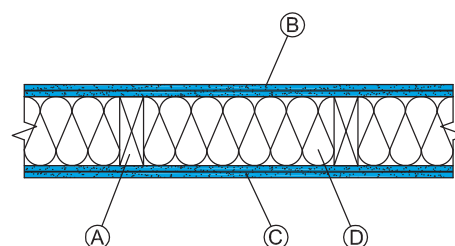
- A** 38 x 89 mm [2" x 4"] wood studs 406 mm [16"] o.c.
ONE SIDE
B 16 mm [5/8"] SilentFX® QuickCut™ Type X applied with 32 mm [1-1/4"] type W screws 300 mm [12"] o.c.
OPPOSITE SIDE
C 16 mm [5/8"] SilentFX® QuickCut™ Type X applied with 32 mm [1-1/4"] type W screws 300 mm [12"] o.c.
 All joints staggered.
D 90 mm [3-1/2"] CertainTeed Thermal & Acoustical Fibreglass Insulation or equivalent.

STC RATING

45
 OL 17-0219

FIRE RATING

1 hr.
 UL/cUL U305
 GA WP 3605



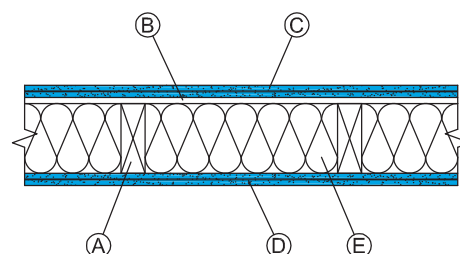
- A** 38 x 89 mm [2" x 4"] wood studs 406 mm [16"] o.c.
ONE SIDE
B Resilient channel 610 mm [24"] o.c.
C 16 mm [5/8"] SilentFX® QuickCut™ Type X applied with 25 mm [1"] type S screws 300 mm [12"] o.c.
OPPOSITE SIDE
D 16 mm [5/8"] SilentFX® QuickCut™ Type X applied with 32 mm [1-1/4"] type W screws 300 mm [12"] o.c.
 All joints staggered.
E 90 mm [3-1/2"] CertainTeed Thermal & Acoustical Fibreglass Insulation or equivalent.

STC RATING

55
 OL 17-0332

FIRE RATING

1 hr.
 UL/cUL U305



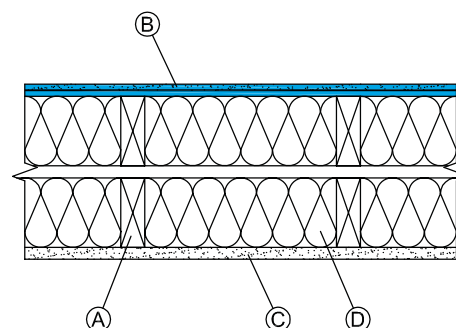
- A** Double row 38 x 89 mm [2" x 4"] wood studs on separate plates, 406 mm [16"] o.c. with 25 mm [1"] gap.
ONE SIDE
B 16 mm [5/8"] SilentFX® QuickCut™ Type X applied with 32 mm [1-1/4"] type W screws 300 mm [12"] o.c.
OPPOSITE SIDE
C 16 mm [5/8"] CertainTeed Type X applied with 32 mm [1-1/4"] type W screws 300 mm [12"] o.c.
 All joints staggered.
D 90 mm [3-1/2"] CertainTeed Thermal & Acoustical Fibreglass Insulation or equivalent.

STC RATING

61
 OL 17-0214

FIRE RATING

1 hr.
 UL/cUL U305
 ULC W313
 GA WP 3370



NOTES

SilentFX® QuickCut™ can be used as either the base or face layer in a multi-layer system without affecting the STC rating. Equivalent fibreglass insulations may be substituted for CertainTeed Insulation products.

- A** Double row 38 x 89 mm [2" x 4"] wood studs on separate plates, 406 mm [16"] o.c. with 25 mm [1"] gap.

ONE SIDE

- B** Face layer 16 mm [5/8"] CertainTeed Type X applied with 41 mm [1-5/8"] type W screws 300 mm [12"] o.c.

- C** Base layer 16 mm [5/8"] SilentFX® QuickCut™ applied with 32 mm [1-1/4"] type W screws 300 mm [12"] o.c.

OPPOSITE SIDE

- D** 16 mm [5/8"] CertainTeed Type X applied with 32 mm [1-1/4"] type W screws 300 mm [12"] o.c. All joints staggered.

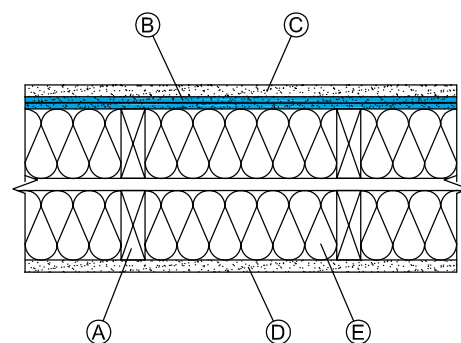
- E** 90 mm [3-1/2"] CertainTeed Thermal & Acoustical Fibreglass Insulation or equivalent.

STC RATING

63
OL 17-0215

FIRE RATING

1 hr.
UL/cUL U305
ULC W313
GA WP 3370



- A** Double row 38 x 89 mm [2" x 4"] wood studs on separate plates, 610 mm [24"] o.c. with 25 mm [1"] gap.

ONE SIDE

- B** Face layer 16 mm [5/8"] CertainTeed Type X applied with 41 mm [1-5/8"] type W screws 300 mm [12"] o.c.

- C** Base layer 16 mm [5/8"] SilentFX® QuickCut™ Type X applied with 32 mm [1-1/4"] type W screws 300 mm [12"] o.c.

OPPOSITE SIDE

- D** 16 mm [5/8"] CertainTeed Type X applied with 32 mm [1-1/4"] type W screws 300 mm [12"] o.c. All joints staggered.

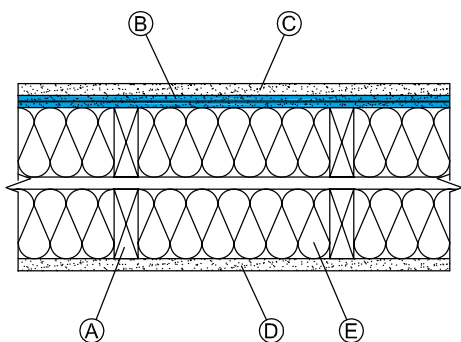
- E** 90 mm [3-1/2"] CertainTeed Thermal & Acoustical Fibreglass Insulation or equivalent.

STC RATING

62
OL 17-0304

FIRE RATING

1 hr.
UL/cUL U309
ULC W313
GA WP 3510



- A** 38 x 89 mm [2" x 4"] wood studs 406 mm [16"] o.c. staggered 200 mm [8"] o.c. on 150 mm [6"] plates.

ONE SIDE

- B** 16 mm [5/8"] SilentFX® QuickCut™ Type X applied with 32 mm [1-1/4"] type W screws 300 mm [12"] o.c.

- C** 90 mm [3-1/2"] CertainTeed Thermal & Acoustical Fiber Glass Insulation or equivalent

OPPOSITE SIDE

- D** 16 mm [5/8"] CertainTeed Type X applied with 32 mm [1-1/4"] type W screws 300 mm [12"] o.c. All joints staggered

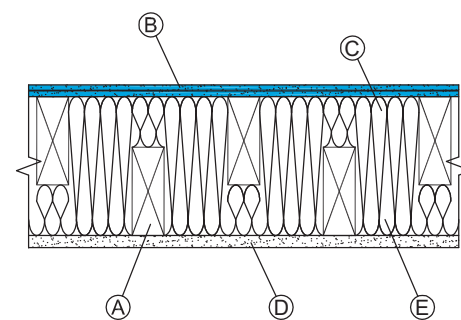
- E** 90 mm [3-1/2"] CertainTeed Thermal & Acoustical Fibreglass Insulation or equivalent

STC RATING

55
OL 15-1112

FIRE RATING

1 hr.
UL/cUL U340
ULC W313
GA WP 3371



NOTES

SilentFX® QuickCut™ can be used as either the base or face layer in a multi-layer system without affecting the STC rating. Equivalent fibreglass insulations may be substituted for CertainTeed Insulation products.

16 mm [5/8"] SILENTFX® QUICKCUT™ - STEEL STUD SYSTEMS

- A** 92 mm [3-5/8"] light gauge .46 mm [.018"] steel studs
610 mm [24"] o.c.

ONE SIDE

- B** 16 mm [5/8"] SilentFX® QuickCut™ Type X applied with
25 mm [1"] type S screws 300 mm [12"] o.c.

OPPOSITE SIDE

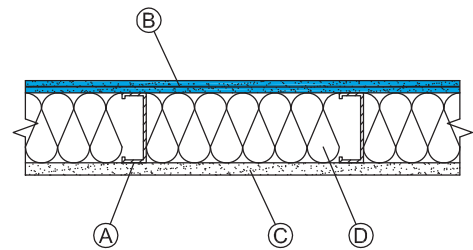
- C** 16 mm [5/8"] CertainTeed Type X applied with 25 mm
[1"] type S screws 300 mm [12"] o.c.
All joints staggered.
- D** 90 mm [3-1/2"] CertainTeed Thermal & Acoustical
Fibreglass Insulation or equivalent.

STC RATING

56
OL 17-0221

FIRE RATING

1 hr.
UL/cUL U465,
V450, V486
GA WP 1011



- A** 92 mm [3-5/8"] light gauge .46 mm [.018"] steel studs
610 mm [24"] o.c.

ONE SIDE

- B** 16 mm [5/8"] SilentFX® QuickCut™ Type X applied
with 25 mm [1"] type S screws 300 mm [12"] o.c.

OPPOSITE SIDE

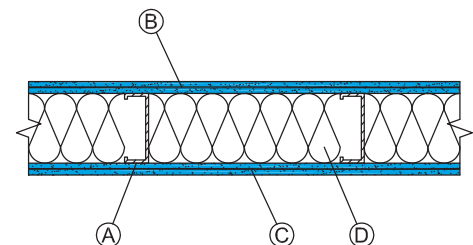
- C** 16 mm [5/8"] SilentFX® QuickCut™ Type X applied
with 25 mm [1"] type S screws 300 mm [12"] o.c.
All joints staggered.
- D** 90 mm [3-1/2"] CertainTeed Thermal & Acoustical
Fibreglass Insulation or equivalent.

STC RATING

58
OL 17-0220

FIRE RATING

1 hr.
UL/cUL U465,
V450, V486



- A** 92 mm [3-5/8"] light gauge .46 mm [.018"] steel studs
610 mm [24"] o.c.

ONE SIDE

- B** Base layer 16 mm [5/8"] CertainTeed Type X applied
with 25 mm [1"] type S screws 300 mm [12"] o.c.
- C** Face layer 16 mm [5/8"] SilentFX® QuickCut™ Type X
applied with 41 mm [1-5/8"] type S screws 300 mm
[12"] o.c.

OPPOSITE SIDE

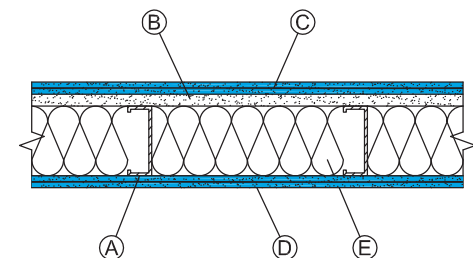
- D** 16 mm [5/8"] SilentFX® QuickCut™ Type X applied
with 25 mm [1"] type S screws 300 mm [12"] o.c.
All joints staggered.
- E** 90 mm [3-1/2"] CertainTeed Thermal & Acoustical
Fibreglass Insulation or equivalent.

STC RATING

61
OL 17-0230

FIRE RATING

1 hr.
UL/cUL U465,
V450, V486



- A** 92 mm [3-5/8"] light gauge .46 mm [.018"] steel studs
610 mm [24"] o.c.

ONE SIDE

- B** Face layer 16 mm [5/8"] SilentFX® QuickCut™ Type X
applied with 41 mm [1-5/8"] type S screws 300 mm
[12"] o.c.
- C** Base layer 16 mm [5/8"] CertainTeed Type X applied
with 25 mm [1"] type S screws 300 mm [12"] o.c.

OPPOSITE SIDE

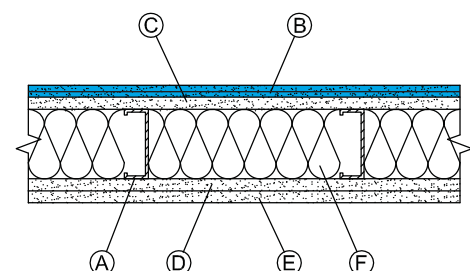
- D** Base layer 16 mm [5/8"] CertainTeed Type X applied
with 25 mm [1"] type S screws 300 mm [12"] o.c.
- E** Face layer 16 mm [5/8"] CertainTeed Type X applied
with 41 mm [1-5/8"] type S screws 300 mm [12"] o.c.
All joints staggered.
- F** 90 mm [3-1/2"] CertainTeed Thermal & Acoustical
Fibreglass Insulation or equivalent.

STC RATING

60
OL 17-0203

FIRE RATING

2 hr.
UL/cUL U411,
V450, V486
ULC W404
GA WP 1524



- A** 92 mm [3-5/8"] light gauge .46 mm [.018"] steel studs 406 mm [16"] o.c.

ONE SIDE

- B** 16 mm [5/8"] SilentFX® QuickCut™ Type X applied with 25 mm [1"] type S screws 300 mm [12"] o.c.

OPPOSITE SIDE

- C** 16 mm [5/8"] CertainTeed Type X applied with 25 mm [1"] type S screws 300 mm [12"] o.c.

All joints staggered.

- D** 90 mm [3-1/2"] CertainTeed Thermal & Acoustical Fibreglass Insulation or equivalent.

STC RATING

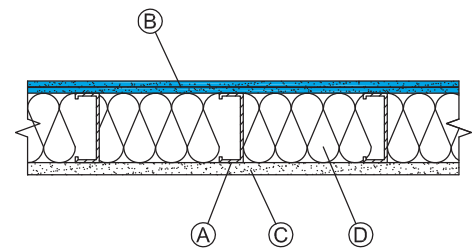
54

OL 17-0222

FIRE RATING

1 hr.

UL/cUL U465,
V450, V486



- A** 92 mm [3-5/8"] light gauge .46 mm [.018"] steel studs 406 mm [16"] o.c.

ONE SIDE

- B** 16 mm [5/8"] SilentFX® QuickCut™ Type X applied with 25 mm [1"] type S screws 300 mm [12"] o.c.

OPPOSITE SIDE

- C** 16 mm [5/8"] SilentFX® QuickCut™ Type X applied with 25 mm [1"] type S screws 300 mm [12"] o.c.

All joints staggered.

- D** 90 mm [3-1/2"] CertainTeed Thermal & Acoustical Fibreglass Insulation or equivalent.

STC RATING

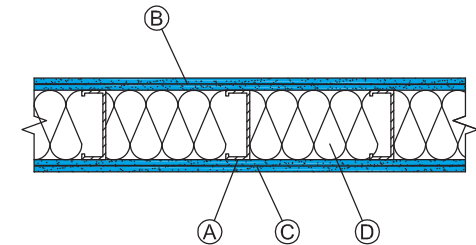
57

OL 17-0223

FIRE RATING

1 hr.

UL/cUL U465,
V450, V486



- A** 92 mm [3-5/8"] 33 mils (20 ga.) steel studs 406 mm [16"] o.c.

ONE SIDE

- B** 16 mm [5/8"] SilentFX® QuickCut™ Type X applied with 25 mm [1"] type S screws 300 mm [12"] o.c.

OPPOSITE SIDE

- C** 16 mm [5/8"] CertainTeed Type X applied with 25 mm [1"] type S screws 300 mm [12"] o.c.

All joints staggered.

- D** 90 mm [3-1/2"] CertainTeed Thermal & Acoustical Fibreglass Insulation or equivalent.

STC RATING

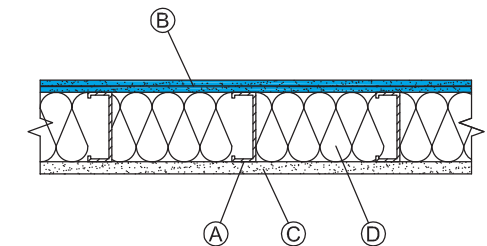
51

OL 17-0302

FIRE RATING

1 hr.

UL/cUL U465,
U425
ULC U418



- A** 92 mm [3-5/8"] 33 mils (20 ga.) steel studs 406 mm [16"] o.c.

ONE SIDE

- B** 16 mm [5/8"] SilentFX® QuickCut™ Type X applied with 25 mm [1"] type S screws 300 mm [12"] o.c.

OPPOSITE SIDE

- C** 16 mm [5/8"] SilentFX® QuickCut™ Type X applied with 25 mm [1"] type S screws 300 mm [12"] o.c.

All joints staggered.

- D** 90 mm [3-1/2"] CertainTeed Thermal & Acoustical Fibreglass Insulation or equivalent.

STC RATING

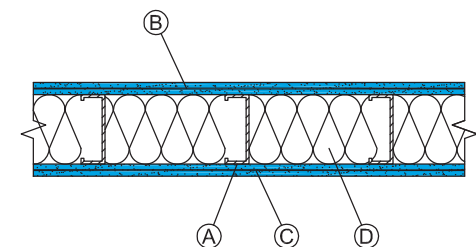
56

OL 17-0301

FIRE RATING

1 hr.

UL/cUL U465,
U425
ULC U418
GA WP 1012



- A** 92 mm [3-5/8"] 33 mils (20 ga.) steel studs 610 mm [24"] o.c.

ONE SIDE

- B** 16 mm [5/8"] SilentFX® QuickCut™ Type X applied with 25 mm [1"] type S screws 300 mm [12"] o.c.

OPPOSITE SIDE

- C** 16 mm [5/8"] CertainTeed Type X applied with 25 mm [1"] type S screws 300 mm [12"] o.c.

All joints staggered.

- D** 90 mm [3-1/2"] CertainTeed Thermal & Acoustical Fibreglass Insulation or equivalent.

STC RATING

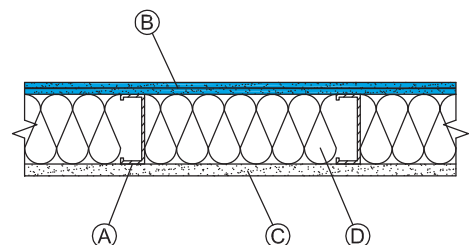
56

OL 17-0229

FIRE RATING

1 hr.

UL/cUL U465,
U425
ULC U418
GA WP 1011



A 92 mm [3-5/8"] 33 mils (20 ga.) steel studs 610 mm [24"] o.c.

ONE SIDE

B 16 mm [5/8"] SilentFX® QuickCut™ Type X applied with 25 mm [1"] type S screws 300 mm [12"] o.c.

OPPOSITE SIDE

C 16 mm [5/8"] SilentFX® QuickCut™ Type X applied with 25 mm [1"] type S screws 300 mm [12"] o.c.

All joints staggered.

D 90 mm [3-1/2"] CertainTeed Thermal & Acoustical Fibreglass Insulation or equivalent.

STC RATING

58

OL 17-0228

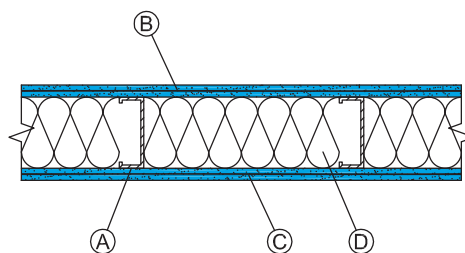
FIRE RATING

1 hr.

UL/cUL U465,

U425

ULC U418



A 92 mm [3-5/8"] 33 mils (20 ga.) steel studs 406 mm [16"] o.c.

ONE SIDE

B Base layer 16 mm [5/8"] SilentFX® QuickCut™ Type X applied with 25 mm [1"] type S screws 300 mm [12"] o.c.

C Face layer 16 mm [5/8"] CertainTeed Type X applied with 41 mm [1-5/8"] type S screws 300 mm [12"] o.c.

OPPOSITE SIDE

D Base layer 16 mm [5/8"] CertainTeed Type X applied with 25 mm [1"] type S screws 300 mm [12"] o.c.

E Face layer 16 mm [5/8"] CertainTeed Type X applied with 41 mm [1-5/8"] type S screws 300 mm [12"] o.c.

All joints staggered.

F 90 mm [3-1/2"] CertainTeed Thermal & Acoustical Fibreglass Insulation or equivalent.

STC RATING

58

OL 17-0303

FIRE RATING

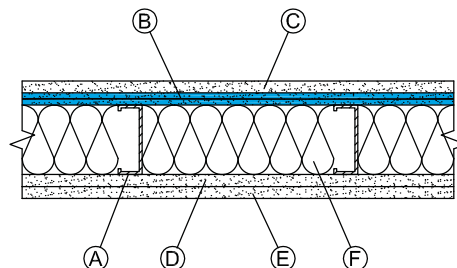
2 hr.

UL/cUL U411,

U425

ULC W404

GA WP 1524



A 92 mm [3-5/8"] 54 mils (16 ga.) steel studs 406 mm [16"] o.c.

ONE SIDE

B 16 mm [5/8"] SilentFX® QuickCut™ Type X applied with 32 mm [1-1/4"] type S-12 screws 300 mm [12"] o.c.

OPPOSITE SIDE

C 16 mm [5/8"] CertainTeed Type X applied with 32 mm [1-1/4"] type S-12 screws 300 mm [12"] o.c.

All joints staggered.

D 90 mm [3-1/2"] CertainTeed Thermal & Acoustical Fibreglass Insulation or equivalent.

STC RATING

48

OL 17-0324

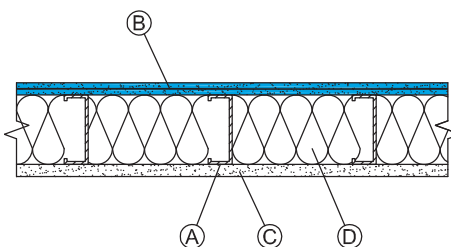
FIRE RATING

1 hr.

UL/cUL U465,

U425

ULC U418



A 92 mm [3-5/8"] 54 mils (16 ga.) steel studs 406 mm [16"] o.c.

ONE SIDE

B 16 mm [5/8"] SilentFX® QuickCut™ Type X applied with 32 mm [1-1/4"] type S-12 screws 300 mm [12"] o.c.

OPPOSITE SIDE

C 16 mm [5/8"] SilentFX® QuickCut™ applied with 32 mm [1-1/4"] type S-12 screws 300 mm [12"] o.c.

All joints staggered.

D 90 mm [3-1/2"] CertainTeed Thermal & Acoustical Fibreglass Insulation or equivalent.

STC RATING

49

OL 17-0323

FIRE RATING

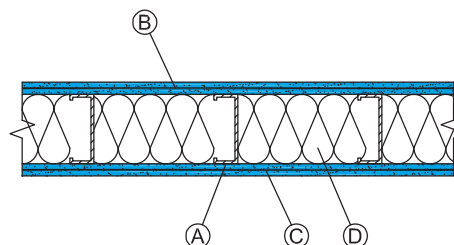
1 hr.

UL/cUL U465,

U425

ULC U418

GA WP 1012



NOTES

SilentFX® QuickCut™ can be used as either the base or face layer in a multi-layer system without affecting the STC rating. Equivalent fibreglass insulations may be substituted for CertainTeed Insulation products.

A 92 mm [3-5/8"] 54 mils (16 ga.) steel studs 406 mm [16"] o.c.

ONE SIDE

B Resilient channel 610 mm [24"] o.c.

C 16 mm [5/8"] SilentFX® QuickCut™ Type X with 25 mm [1"] type S screws 300 mm [12"] o.c.

OPPOSITE SIDE

D 16 mm [5/8"] CertainTeed Type X applied with 32 mm [1-1/4"] type S-12 screws 300 mm [12"] o.c.
All joints staggered.

E 90 mm [3-1/2"] CertainTeed Thermal & Acoustical Fibreglass Insulation or equivalent.

STC RATING

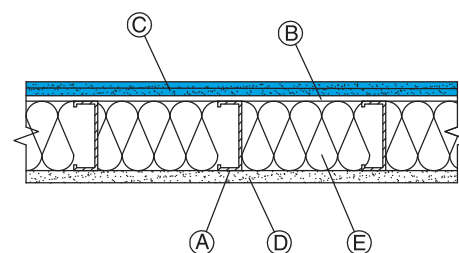
53

OL 17-0325

FIRE RATING

1 hr.

UL/cUL U465



A 102 mm [4"] 54 mils (16 ga.) steel studs 406 mm [16"] o.c.

ONE SIDE

B 16 mm [5/8"] SilentFX® QuickCut™ Type X with 32 mm [1-1/4"] type S-12 screws 300 mm [12"] o.c.

OPPOSITE SIDE

C 16 mm [5/8"] CertainTeed Type X applied with 32 mm [1-1/4"] type S-12 screws 300 mm [12"] o.c.
All joints staggered.

D 90 mm [3-1/2"] CertainTeed Thermal & Acoustical Fibreglass Insulation or equivalent.

STC RATING

50

OL 17-0231

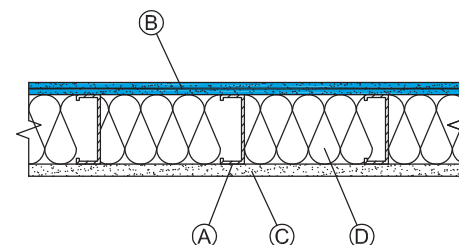
FIRE RATING

1 hr.

UL/cUL U465,

U425

ULC U418



A 102 mm [4"] 54 mils (16 ga.) steel studs 406 mm [16"] o.c.

ONE SIDE

B 16 mm [5/8"] SilentFX® QuickCut™ Type X applied with 32 mm [1-1/4"] type S-12 screws 300 mm [12"] o.c.

OPPOSITE SIDE

C 16 mm [5/8"] SilentFX® QuickCut™ applied with 32 mm [1-1/4"] type S-12 screws 300 mm [12"] o.c.
All joints staggered.

D 90 mm [3-1/2"] CertainTeed Thermal & Acoustical Fibreglass Insulation or equivalent.

STC RATING

52

OL 17-0224

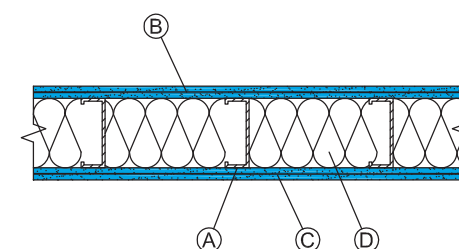
FIRE RATING

1 hr.

UL/cUL U465,

U425

ULC U418



A 152 mm [6"] 54 mils (16 ga.) steel studs 406 mm [16"] o.c.

ONE SIDE

B 16 mm [5/8"] SilentFX® QuickCut™ Type X applied with 32 mm [1-1/4"] type S-12 screws 300 mm [12"] o.c.

OPPOSITE SIDE

C 16 mm [5/8"] CertainTeed Type X applied with 32 mm [1-1/4"] type S-12 screws 300 mm [12"] o.c.
All joints staggered.

D 152 mm [6"] CertainTeed Thermal & Acoustical Fibreglass Insulation or equivalent.

STC RATING

52

OL 17-0321

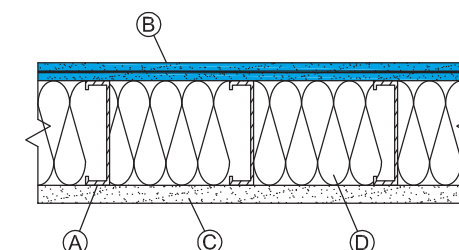
FIRE RATING

1 hr.

UL/cUL U465,

U425

ULC U418



A 152 mm [6"] 33 mils (20 ga.) steel studs 406 mm [16"] o.c.

ONE SIDE

B 16 mm [5/8"] SilentFX® QuickCut™ Type X applied with 25 mm [1"] type S screws 300 mm [12"] o.c.

OPPOSITE SIDE

C 16 mm [5/8"] SilentFX® QuickCut™ Type X applied with 25 mm [1"] type S screws 300 mm [12"] o.c.
All joints staggered.

D 152 mm [6"] CertainTeed Thermal & Acoustical Fibreglass Insulation or equivalent.

STC RATING

56

OL 17-0305

FIRE RATING

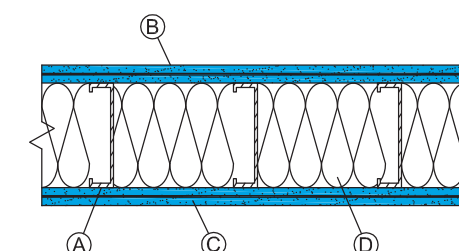
1 hr.

UL/cUL U465,

U425

ULC U418

GA WP 1012



NOTES

SilentFX® QuickCut™ can be used as either the base or face layer in a multi-layer system without affecting the STC rating. Equivalent fibreglass insulations may be substituted for CertainTeed Insulation products.

- A** 152 mm [6"] 33 mils (20 ga.) steel studs 406 mm [16"] o.c.
ONE SIDE
B 16 mm [5/8"] SilentFX® QuickCut™ Type X with 25 mm [1"] type S screws 300 mm [12"] o.c.

OPPOSITE SIDE

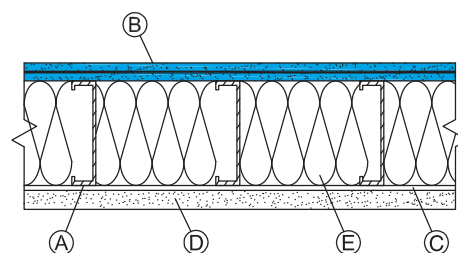
- C** Resilient channel 610 mm [24"] o.c.
D 16 mm [5/8"] CertainTeed Type X applied with 25 mm [1"] type S screws 300 mm [12"] o.c.
 All joints staggered.
E 152 mm [6"] CertainTeed Thermal & Acoustical Fibreglass Insulation or equivalent.

STC RATING

57
 OL 17-0306

FIRE RATING

1 hr.
 UL/cUL U465



- A** 152 mm [6"] 54 mils (16 ga.) steel studs 406 mm [16"] o.c.
ONE SIDE
B 16 mm [5/8"] SilentFX® QuickCut™ Type X applied with 32 mm [1-1/4"] type S-12 screws 300 mm [12"] o.c.

OPPOSITE SIDE

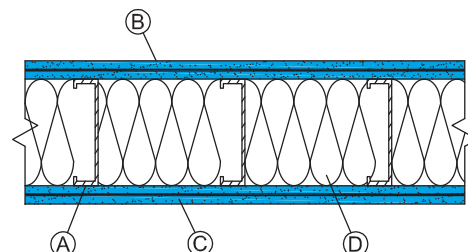
- C** 16 mm [5/8"] SilentFX® QuickCut™ Type X applied with 32 mm [1-1/4"] type S-12 screws 300 mm [12"] o.c.
 All joints staggered.
D 152 mm [6"] CertainTeed Thermal & Acoustical Fibreglass Insulation or equivalent.

STC RATING

56
 OL 17-0322

FIRE RATING

1 hr.
 UL/cUL U465, U425
 ULC U418
 GA WP 1012



- A** Double row 64 mm [2-1/2"] light gauge .46 mm [.018"] steel studs 610 mm [24"] o.c., in separate tracks with a 25 mm [1"] gap.

ONE SIDE

- B** 16 mm [5/8"] SilentFX® QuickCut™ Type X applied with 25 mm [1"] type S screws 300 mm [12"] o.c.

OPPOSITE SIDE

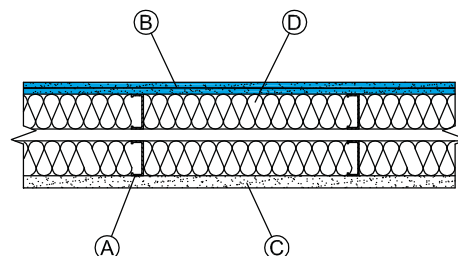
- C** 16 mm [5/8"] CertainTeed Type X applied with 25 mm [1"] type S screws 300 mm [12"] o.c.
 All joints staggered.
D 90 mm [3-1/2"] CertainTeed Thermal & Acoustical Fibreglass Insulation or equivalent, both rows.

STC RATING

61
 OL 17-0202

FIRE RATING

1 hr.
 UL/cUL U420
 GA WP 5015



- A** Double row 64 mm [2-1/2"] light gauge .46 mm [.018"] steel studs 610 mm [24"] o.c., in separate tracks with a 25 mm [1"] gap.

ONE SIDE

- B** Base layer 16 mm [5/8"] SilentFX® QuickCut™ Type X applied with 25 mm [1"] type S screws 300 mm [12"] o.c.
C Face layer 16 mm [5/8"] CertainTeed Type X applied with 41 mm [1-5/8"] type S screws 300 mm [12"] o.c.

OPPOSITE SIDE

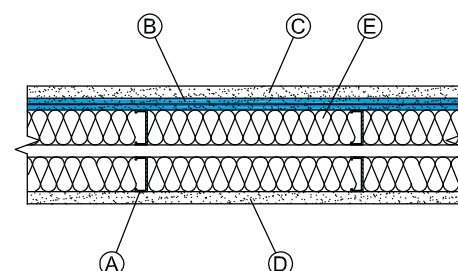
- D** 16 mm [5/8"] CertainTeed Type X applied with 25 mm [1"] type S screws 300 mm [12"] o.c.
 All joints staggered.
E 90 mm [3-1/2"] CertainTeed Thermal & Acoustical Fibreglass Insulation or equivalent, both rows.

STC RATING

62
 OL 17-0201

FIRE RATING

1 hr.
 UL/cUL U420
 GA WP 5015



NOTES

SilentFX® QuickCut™ can be used as either the base or face layer in a multi-layer system without affecting the STC rating. Equivalent fibreglass insulations may be substituted for CertainTeed Insulation products.

16 mm [5/8"] SILENTFX® QUICKCUT™ - WOOD I-JOIST FLOOR-CEILING SYSTEMS

SOUND RATING
FLOOR-CEILING ASSEMBLY DESCRIPTION

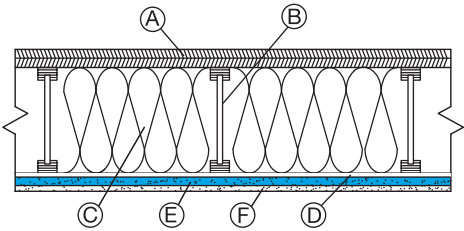
BASE ASSEMBLY
ONE SIDE

- A Subflooring Nom. 15 mm [19/32"] T&G plywood perpendicular to joists with end joints staggered and secured to joists with construction adhesive and 6D ring shank nails or staples 305 mm [12"] o.c.
- B Wood I-joists 241 mm [9-1/2"] deep wood I-joists spaced 610 mm [24"] o.c.
- C Insulation 241 mm [9-1/2"] CertainTeed Optima® Loose Fill Insulation

OPPOSITE SIDE

- D Resilient channels installed perpendicular to I-joists at 305 mm [12"] o.c.
- E Base layer 16 mm [5/8"] SilentFX® QuickCut™ Type X applied perpendicular to resilient channel with 25 mm [1"] type S screws 203 mm [8"] o.c.
- F Face layer 13 mm [1/2"] CertainTeed Type C applied perpendicular to the resilient channel with 41 mm [1-5/8"] type S screws 203 mm [8"] o.c.

- STC RATING
54 (NGC 5017060)
- IIC RATING
46 (NGC 5017091)
- FIRE RATING
1 hr.
UL/cUL M535



Note: **Impact insulation class (IIC)** rating is a single number rating of the sound attenuation of a building floor of noise resulting from impact.

SOUND RATING
FLOOR-CEILING ASSEMBLY DESCRIPTION

Base Assembly + finished floor of 19 mm [3/4"] Gypsum Concrete floor topping over sound mat with Carpet and Pad

Base Assembly + finished floor of 19 mm [3/4"] Gypsum Concrete floor topping over sound mat with 5 mm [3/16"] Luxury Vinyl Tile (LVT)

Base Assembly + finished floor of 19 mm [3/4"] Gypsum Concrete floor topping over sound mat with 5 mm [3/16"] Luxury Vinyl Tile (LVT) over underlayment

Base Assembly + finished floor of 19 mm [3/4"] Gypsum Concrete floor topping over sound mat with 9.5 mm [3/8"] Luxury Vinyl Tile (LVT) over Engineered Hardwood

| STC (TEST NO.) | IIC (TEST NO.) |
|-------------------|-------------------|
| 60 (NGC 5017069) | 78 (NGC 5017110) |
| 60 (NGC 5017070) | 57 (NGC 5017111) |
| 62 (NGC 5017071) | 58 (NGC 5017112) |
| 60 (NGC 5017072) | 58 (NGC 5017113) |

NOTES
SilentFX® QuickCut™ can be used as either the base or face layer in a multi-layer system without affecting the STC rating. Equivalent fiberglass insulations may be substituted for CertainTeed Insulation products.



CertainTeed Builds Better Environments

CertainTeed has the unique advantage of offering some of the most comprehensive interior building solutions in the industry.



SilentFX® QuickCut™ noise-reducing acoustical gypsum board with M2Tech® for added moisture and mould resistance.



AirRenew M2TECH®

AirRenew® M2Tech® formaldehyde-absorbing indoor air quality gypsum board with M2Tech® for added moisture and mould resistance.



EXTREME ABUSE **EXTREME IMPACT**

Extreme Abuse and Extreme Impact provide added durability, with M2Tech® for added moisture and mould resistance.



M2TECH

M2Tech® gypsum board is made with technology specially formulated for enhanced moisture and mould resistance.



Diamondback

The GlasRoc® reinforced glass mat family of products includes Diamondback® Tile Backer for use in moisture-prone spaces.



GlasRoc

GlasRoc® Sheathing, Shaftliner and Roof Board provide added moisture and mould resistance, fire resistance and durability. CertainTeed Type X and Type C gypsum boards are standard fire-resistant paper-faced products.



Easi-Lite

Easi-Lite® lightweight interior gypsum board, as well as other CertainTeed paper-faced gypsum boards, are made of up to 99% recycled paper and are easily recycled after use.



The No-Coat® Structural Laminate Drywall Corner System

Specify NO-COAT®, and guarantee the highest performing drywall corner trim available.

The NO-COAT® Structural Laminate (SLAM®) Drywall Corner System represents a revolutionary drywall finishing solution that outperforms all other corners in the market.

NO-COAT® DELIVERS:

- Superior strength and durability
- Faster drywall corner installation
- Bottom line savings in labour and mud compared to traditional corner bead design
- Elimination of costly callbacks and drywall repairs

Whether finishing off-angles, archways, inside or outside corners, NO-COAT® offers a complete drywall corner trim system for every job.

SLAM® TECHNOLOGY

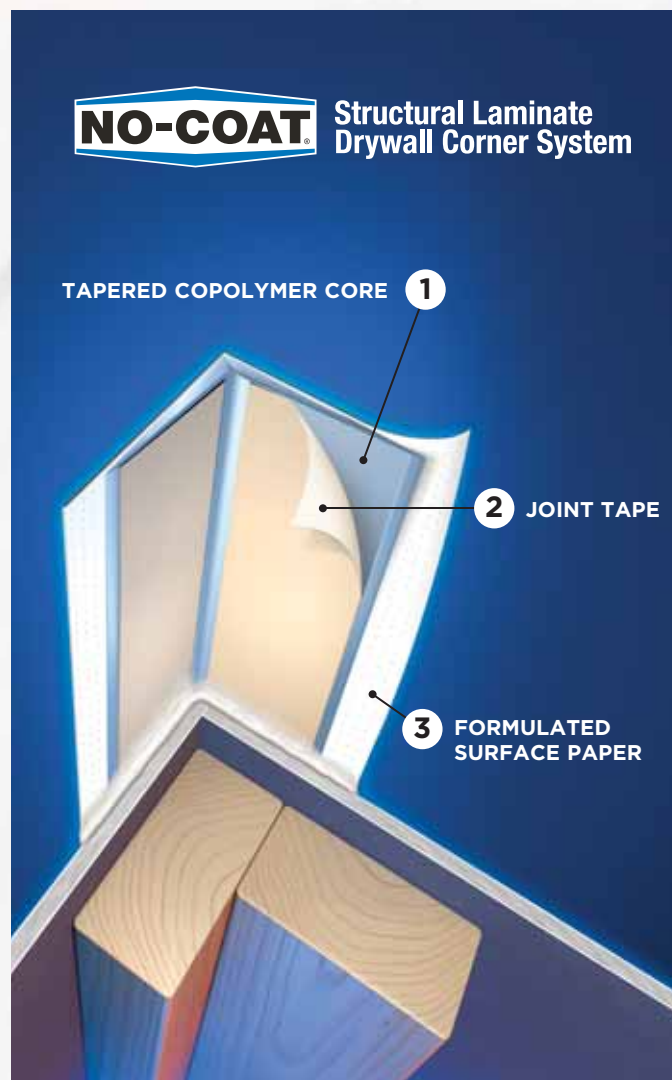
SLAM® Technology integrates three key components providing the durability, flexibility, and strength that won't crack under pressure:

1. **Tapered copolymer core** that will not rust, requires less mud and is capable of withstanding severe impacts
2. **Joint tape** that permanently bonds the corner to drywall with all-purpose joint compound
3. **Formulated surface paper** that eliminates cracks, chips and peels, accepts any finish and resists abrasion

A RADICAL DEPARTURE FROM CORNER BEAD

For the past 60 years, drywall contractors have reached for corner bead because it has been the only option available — not because it's the best product.

Recent improvements such as plastic or paper faced metal are still based on a flawed bead design that creates more problems than it solves. Beads are notorious in the industry for causing costly callbacks from denting, chipping, rusting, cracking and peeling. In addition, beads require excessive mud application that costs contractors time and money.



Gypsum

SilentFX® QuickCut™ Noise-Reducing Gypsum Board is manufactured in nominal 13 mm (1/2") and 16 mm (5/8") Type X, 1220 mm (4') width by 2440 mm (8'), 2745 mm (9'), 3050 mm (10') and 3660 mm (12') lengths.

Product Specifications

| Product | Product Standards | Application Standards |
|---|---|-----------------------------------|
| 13 mm (1/2") SilentFX® QuickCut™ | ASTM C1766, C1396 and C1629 | ASTM C840; GA-216; CAN/CSA-A82.31 |
| 16 mm (5/8") SilentFX® QuickCut™ Type X | ASTM C1766, C1396 and C1629 ASTM E119 (UL 263, NFPA 251, CAN/ULC-S101) | ASTM C840; GA-216; CAN/CSA-A82.31 |
| | 13 mm (1/2") | 16 mm (5/8") Type X |
| Widths | 1220 mm (4') | 1220 mm (4') |
| Standard Lengths* | 2440 mm (8') | 2440 mm (8') |
| | 2745 mm (9') | 2745 mm (9') |
| | 3050 mm (10') | 3050 mm (10') |
| | 3660 mm (12') | 3660 mm (12') |
| Weight | 10.3 kg/m ² (2.1 psf) | 13.7 kg/m ² (2.8 psf) |
| Edges | Tapered | Tapered |
| Flame Spread | 5 | 5 |
| Smoke Developed | 5 | 5 |
| Mould Resistance Rating** (ASTM D3273) | 10 | 10 |
| Abuse Resistance Classifications (ASTM C1629) | | |
| Surface Abrasion (D4977) | 2 | 2 |
| Soft Body Impact (E695) | 1 | 1 |

The performance of SilentFX® QuickCut™ Noise-Reducing Gypsum Board in actual use may not accurately reproduce these ASTM laboratory test results. Good design and construction practices that prevent exposure of building products to water and moisture are the most effective strategy to avoid mould growth.

* Special lengths or edges may be available as a special order. Please contact your CertainTeed Representative. Standard lengths may differ by region, please contact your sales rep for more information.

** No mould growth detected. Note: 10 is the best possible rating for ASTM D3273.



CertainTeed Corporation

CEILINGS • DECKING • FENCE • GYPSUM • INSULATION • RAILING • ROOFING • SIDING • TRIM

2424 Lakeshore Rd. West, Mississauga, ON L5J 1K4 Professional: 800-233-8990 Consumer: 800-782-8777 certainteed.ca